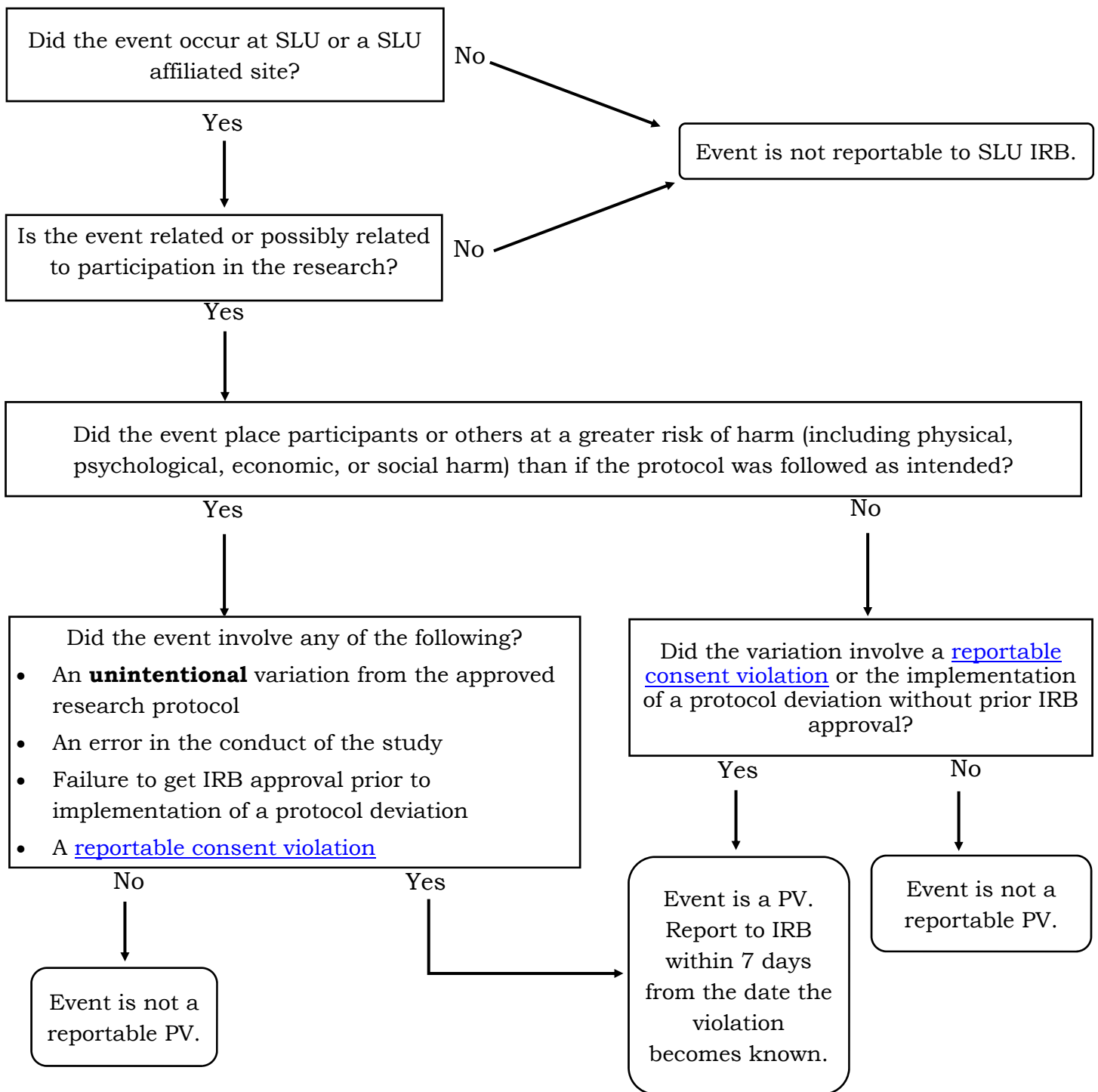


Saint Louis University Institutional Review Board Protocol Violation (PV) Decision Tree



PVs should be reported on the Report Form in eIRB. Submit the [Change-in-Protocol/For Information Only form](#) if the study is not in eIRB.

PVs that result in SAEs are to be reported in accordance with SAE required timelines.

If the PV results in the death of a subject, notify the IRB immediately at 977-7744 or irb@slu.edu.